

## **Statement of Purpose:**

As Christians, our dress should reflect our desire to honor God. Our clothing should be modest and decent (*I Timothy 2:9,10*) and should not draw undue attention to ourselves (*I John 2:15-17*). Students are to present a conservative, wholesome image as part of their testimony while on school premises and during any **Christian Central Academy** related school function both on and off our campus (*athletic events, music programs, etc.*). CCA has chosen **LANDS' END** (information below), **CHOICE UNIFORMS** (800-482-0675, [www.choiceuniforms.com](http://www.choiceuniforms.com)) and **FLYNN & O'HARA** (800-441-4122) as the dress code suppliers. Lands' End clothing is also available at Sears.

**IMPORTANT ORDERING INFORMATION:** CCA's Preferred School number is: **9000-6544-2**  
*If desired, CCA's Embroidered Logo number is: **0141867K** (additional \$5.50)*

MAIL: **LANDS' END for School**  
2 Lands' End Lane  
Dodgeville, WI 53595-0640

PHONE: 1-800-469-2222  
FAX: 1-800-332-0103  
INTERNET: [www.landsend.com/school](http://www.landsend.com/school)

## **Grades K-2 DRESS CODE FOR 2009-2010**

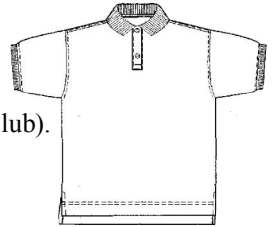
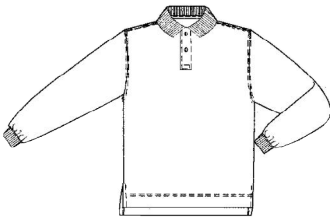
All clothing and footwear worn to school must be labeled with your student's name.  
This will enable us to return to your student the many brand new items that are sent to lost and found.

### **TOPS - For BOYS & GIRLS:**

Students may wear solid, long sleeved, turtleneck shirts under a dress code polo or a dress code dress shirt which must be tucked in.

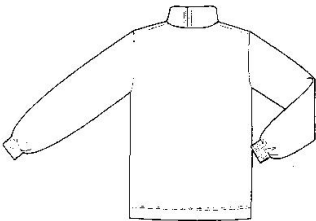
#### **Polo shirts.....long or short sleeved in solid colors ONLY**

No logo of any kind, large or small unless CCA embroidered logo (CCA Booster Club).  
*Must purchase at Lands' End, Choice Uniforms or Flynn & O'Hara.*  
*Refer to "LANDS' END" catalog or website.*  
~ NOTE: ALL SHIRTS MUST BE TUCKED IN ~



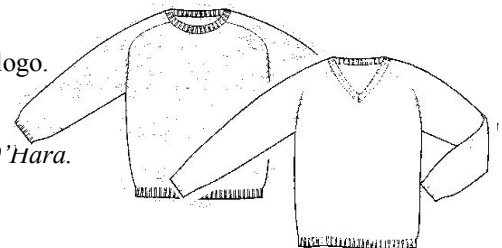
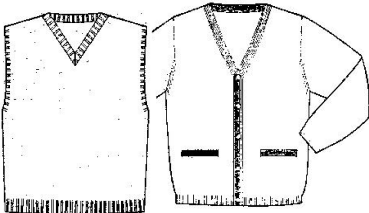
#### **Turtlenecks.....long sleeved in solid colors ONLY (NO MOCK turtlenecks please!)**

No logo of any kind, large or small unless CCA embroidered logo.  
*Must purchase at Lands' End, Choice Uniforms or Flynn & O'Hara.*  
*Refer to "LANDS' END" catalog or website.*  
~ NOTE: ALL SHIRTS MUST BE TUCKED IN ~



#### **Sweaters.....in solid colors ONLY**

Cardigan, V-neck, Crew neck, Vest  
No logo of any kind, large or small unless CCA embroidered logo.  
**Must** have polo, turtleneck, or dress shirt/blouse underneath.  
No belts please.  
*Must purchase at Lands' End, Choice Uniforms or Flynn & O'Hara.*  
*Refer to "LANDS' END" catalog or website.*



#### **CCA Sweatshirts....in blue or white ONLY with CCA logo**

**Must** have polo, turtleneck, or dress shirt/blouse underneath.  
MUST be purchased from CCA Booster Club, located in the Clothes Connection.  
**Note:** The collar must be worn on the outside of the sweatshirt, please.



## TOPS *continued*

### Dress shirts (Boys)...long or short sleeved dress shirt

**in solid colors ONLY** (NO Chambray please!)

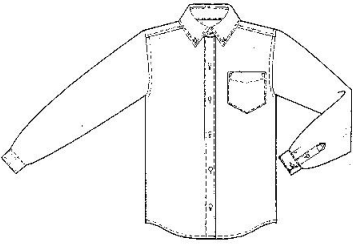
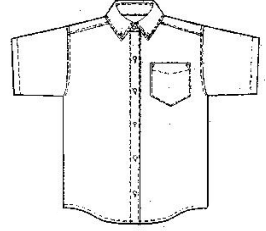
Must have pointed collar, *with* or *without* buttoned down collar.  
No logo of any kind, large or small unless CCA embroidered logo.  
WHITE for Chapel.

Must purchase at *Lands' End, Choice Uniforms or Flynn & O'Hara.*

Refer to "LANDS' END" catalog or website.

~ NOTE: ALL SHIRTS MUST BE TUCKED IN ~

ALSO, if an undershirt is worn underneath the shirt, the undershirt MUST be a plain, solid color.  
A plain white undershirt must be worn under a white dress shirt.



### Dress blouses (Girls)...long sleeved, short sleeved or tailored broadcloth, frilly dress blouse

**in solid colors ONLY** (No Chambray please!)

May have rounded, pointed or buttoned down collar.  
WHITE for Chapel.

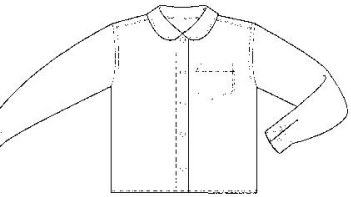
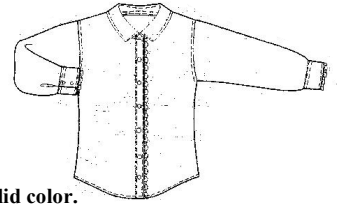
No logo of any kind, large or small unless CCA embroidered logo.

Must purchase at *Lands' End, Choice Uniforms or Flynn & O'Hara.*

Refer to "LANDS' END" catalog or website.

~ NOTE: ALL BLOUSES MUST BE TUCKED IN ~

ALSO, if an undershirt is worn underneath the shirt, the undershirt MUST be a plain, solid color.  
A plain white undershirt must be worn under a white dress shirt.



## BOTTOMS - For BOYS & GIRLS:

NOTE: ALL CLOTHING WITH BELT LOOPS MUST BE WORN WITH A BELT.

### Pants - (Boys).....pleated, plain or elastic waist Chino pants or cords in Khaki or Classic Navy.

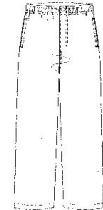
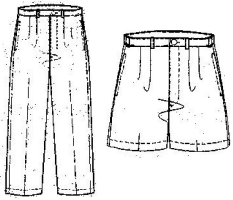
**Chino walking shorts in Khaki or Classic Navy.**

NO SWEAT PANTS, JEANS, WIND SUITS, OR JEAN CUT CORDS.

(shorts are permitted **September through October and May through June.**)

Must purchase at *Lands' End, Choice Uniforms or Flynn & O'Hara.*

Refer to "LANDS' END" catalog or website.



### Pants - (Girls).....pleated, plain or elastic waist Chino pants or cords in Khaki or Classic Navy.

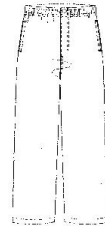
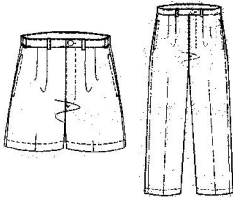
**Chino walking shorts in Khaki or Classic Navy.**

NO SWEAT PANTS, JEANS, WIND SUITS, OR JEAN CUT CORDS.

(shorts are permitted **September through October and May through June.**)

Must purchase at *Lands' End, Choice Uniforms or Flynn & O'Hara.*

Refer to "LANDS' END" catalog or website.



### Skirts - (Girls)..... A-line skirt in Khaki or Classic Navy.

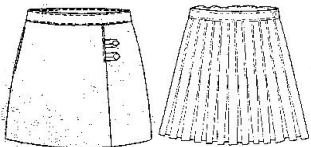
**Four kick pleat skirt in Khaki or Navy.**

**Pleated skirt in Khaki or Classic Navy.**

Must purchase at *Lands' End, Choice Uniforms or Flynn & O'Hara.*

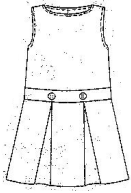
Refer to "LANDS' END" catalog or website.

NOTE: Skirt length must be knee length.



## BOTTOMS *continued*

**Jumper.....Drop Waist jumper with Four Kick Pleats in Khaki or Classic Navy.**

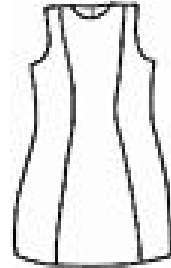


**Princess Line jumper in Khaki or Navy.**

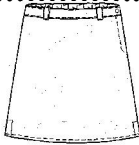
*Must purchase at Lands' End, Choice Uniforms or Flynn & O'Hara.*

*Refer to "LANDS' END" catalog or website.*

*NOTE: Length must be knee length.*



**Skort.....Chino and Corduroy skort in Khaki or Classic Navy.**



*(May NOT be worn on Chapel days).*

*Must purchase at Lands' End, Choice Uniforms or Flynn & O'Hara.*

*Refer to "LANDS' END" catalog or website.*

## CHAPEL DRESS - *BOYS*

NOTE: ALL CLOTHING WITH BELT LOOPS MUST BE WORN WITH A BELT.

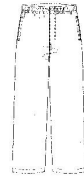
**Pants - (Boys).....pleated, plain or elastic waist Chino pants or cords in Khaki or Classic Navy.**



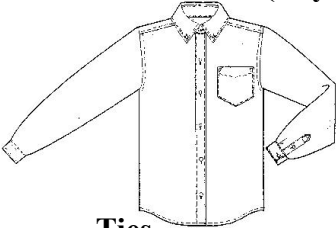
*NO SWEAT PANTS, JEANS, WIND SUITS, OR JEAN CUT CORDS.*

*Must purchase at Lands' End, Choice Uniforms or Flynn & O'Hara.*

*Refer to "LANDS' END" catalog or website.*



**Dress shirts (Boys) long or short sleeved dress shirt in WHITE.**



*Must have pointed collar, with or without buttoned down collar.*

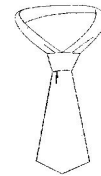
*No logo of any kind, large or small unless CCA embroidered logo.*

*Must purchase at Lands' End, Choice Uniforms or Flynn & O'Hara.*

*Refer to "LANDS' END" catalog or website.*

*~ NOTE: ALL SHIRTS MUST BE TUCKED IN ~*

*ALSO, if an undershirt is worn underneath the dress shirt, it MUST be plain white.*

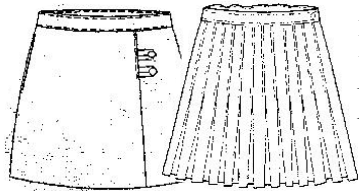


**Ties.....Optional on Chapel days**

**Footwear.....Athletic footwear is acceptable with solid color socks. Spikes, platform shoes and flip flops are not allowed. (Flip flops are any shoe that divides the toes.)**

## CHAPEL DRESS - *GIRLS*

**Skirts - (Girls).....A-line skirt in Khaki or Classic Navy.**



**Four kick pleat skirt in Khaki or Navy.**

**Pleated skirt in Khaki or Classic Navy.**

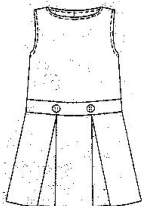
*Must purchase at Lands' End, Choice Uniforms or Flynn & O'Hara.*

*Refer to "LANDS' END" catalog or website.*

*NOTE: Skirt length must be knee length.*

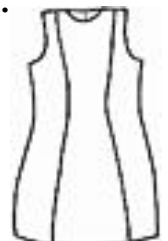


**Jumper.....Drop Waist jumper with Four Kick Pleats in Khaki or Classic Navy.**



**Princess Line Jumper in Khaki or Navy.**

*Must purchase at Lands' End, Choice Uniforms or Flynn & O'Hara.*



## CHAPEL DRESS - *GIRLS continued*

**Dress blouses (Girls)...long sleeved, short sleeved or tailored broadcloth, frilly dress blouse**

**in WHITE.**

May have rounded, pointed or buttoned down collar.

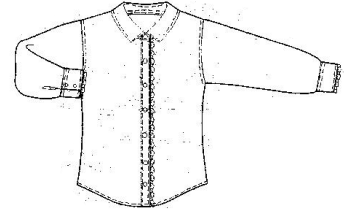
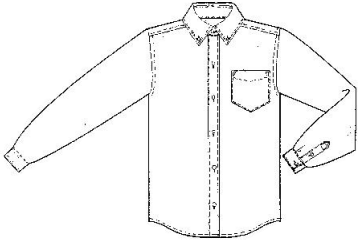
No logo of any kind, large or small unless CCA embroidered logo.

*Must purchase at Lands' End, Choice Uniforms or Flynn & O'Hara.*

*Refer to "LANDS' END" catalog or website.*

~ NOTE: ALL BLOUSES MUST BE TUCKED IN ~

ALSO, if an undershirt is worn underneath the dress shirt, it MUST be plain white.



## FOOT WEAR on NON-CHAPEL DAYS

**For Boys and Girls.....Athletic footwear is acceptable with solid color socks. Spikes, platform shoes and flip flops are not allowed. (Flip flops are any shoe that divides the toes.)**

## Designated JEANS DAYS

Jeans must be **properly fitted** (*not oversized, length not touching the floor*), pulled up to the waist, clean, and neat (*no cut, torn or worn areas*). Jeans may have modest ornamentation such as stripes, appliqués, etc. All pants with belt loops must be worn with a belt.

## Designated DRESS-DOWN DAYS

Dress-Down Tops - A hoodie, sweatshirt, or any appropriate-modest sweater may be worn with any dress-code top.

Dress-Down Bottoms - Any modest bottom may be worn as long as it is **properly fitted** (*not oversized, length not touching the floor*). The following may not be worn: pajama bottoms, footless leggings, spandex, sweat pants, athletic shorts or pants.

Jeans must be **properly fitted** (*not oversized, length not touching the floor*), pulled up to the waist, clean, and neat (*no cut, torn or worn areas*). Jeans may have modest ornamentation such as stripes, appliqués, etc. All pants with belt loops must be worn with a belt.

**The administration reserves the right to object to any inappropriate clothing or shoes that may be considered unsafe. Also, there is a \$1 charge for each dress-down top, bottom and untucked shirt on dress-down days.**

*The administration expects all parents to partner with the school in following closely the guidelines of the dress code.*

**THANK YOU FOR YOUR COOPERATION.**

## Statement of Purpose:

As Christians, our dress should reflect our desire to honor God. Our clothing should be modest and decent (*I Timothy 2:9,10*) and should not draw undue attention to ourselves (*I John 2:15-17*). Students are to present a conservative, wholesome image as part of their testimony while on school premises and during any **Christian Central Academy** related school function both on and off our campus (*athletic events, music programs, etc.*).

CCA has chosen **LANDS' END** (information below), **CHOICE UNIFORMS** (800-482-0675, [www.choiceuniforms.com](http://www.choiceuniforms.com)) and **FLYNN & O'HARA** (800-441-4122) as the dress code suppliers. Lands' End clothing is also available at Sears.

**IMPORTANT ORDERING INFORMATION: CCA's Preferred School number is: 9000-6544-2**

*If desired, CCA's embroidered Logo number is: 0141867K (additional \$5.50)*

MAIL: **LANDS' END for School**  
2 Lands' End Lane  
Dodgeville, WI 53595-0640

PHONE: 1-800-469-2222  
FAX: 1-800-332-0103  
INTERNET: [www.landsend.com/school](http://www.landsend.com/school)

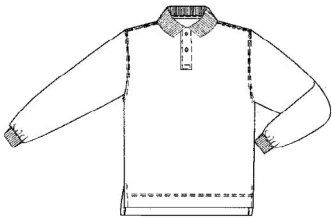
### Grades 3-5 DRESS CODE FOR 2009-2010

All clothing and footwear worn to school must be labeled with your student's name. This will enable us to return to your student the many brand new items that are sent to lost and found.

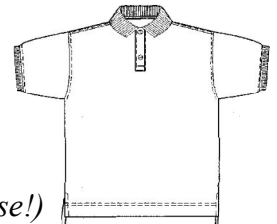
## **TOPS - For BOYS & GIRLS:**

Students may wear solid, long sleeved, turtleneck shirts under a dress code polo or a dress code dress shirt which must be tucked in.

### **Polo shirts.....long or short sleeved in solid colors ONLY**



No logo of any kind, large or small unless CCA embroidered logo (CCA Booster Club polo).  
*Must purchase at Lands' End, Choice Uniforms or Flynn & O'Hara.*  
*Refer to "LANDS' END" catalog or website.*  
~ NOTE: ALL SHIRTS MUST BE TUCKED IN ~

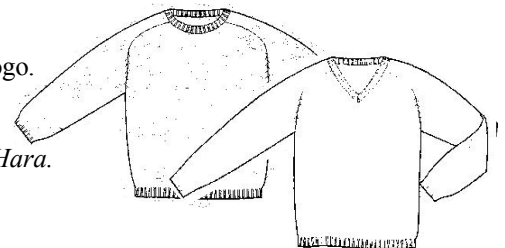


### **Turtlenecks.....long sleeved in solid colors ONLY (NO MOCK turtlenecks please!)**

No logo of any kind, large or small unless CCA embroidered logo.  
*Must purchase at Lands' End, Choice Uniforms or Flynn & O'Hara.*  
*Refer to "LANDS' END" catalog or website.*  
~ NOTE: ALL SHIRTS MUST BE TUCKED IN ~

### **Sweaters.....in solid colors ONLY**

Cardigan, V-neck, Crew neck, Vest  
No logo of any kind, large or small unless CCA embroidered logo.  
**Must** have polo, turtleneck, or dress shirt/blouse underneath.  
No belts please.  
*Must purchase at Lands' End, Choice Uniforms or Flynn & O'Hara.*  
*Refer to "LANDS' END" catalog or website.*



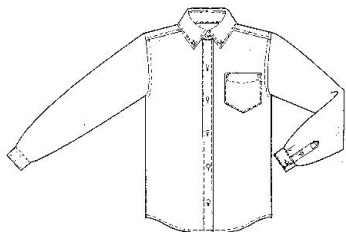
### **CCA Sweatshirts...in blue or white ONLY with CCA logo**

**Must** have polo, turtleneck, or dress shirt/blouse underneath.  
MUST be purchased from CCA Booster Club, located in the Clothes Connection.  
Note: The collar must be worn on the outside of the sweatshirt, please.



## TOPS *continued*

### Dress shirts (Boys)...long or short sleeved dress shirt in solid colors ONLY (NO Chambray please!)



Must have pointed collar, *with* or *without* buttoned down collar.  
No logo of any kind, large or small unless CCA embroidered logo.  
WHITE for Chapel.

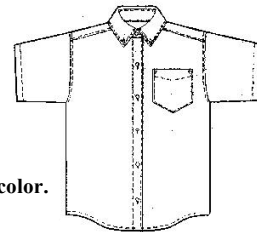
*Must purchase at Lands' End, Choice Uniforms or Flynn & O'Hara.*

*Refer to "LANDS' END" catalog or website.*

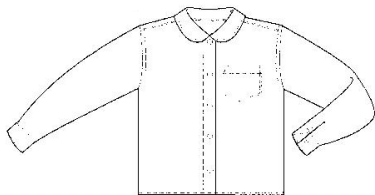
~ NOTE: ALL SHIRTS MUST BE TUCKED IN ~

ALSO, if an undershirt is worn underneath the shirt, the undershirt MUST be a plain, solid color.

A plain white undershirt must be worn under a white dress shirt.



### Dress blouses (Girls)...long sleeved, short sleeved or tailored broadcloth, frilly dress blouse in solid colors ONLY (No Chambray please!)



May have rounded, pointed or buttoned down collar.

WHITE for Chapel.

No logo of any kind, large or small unless CCA embroidered logo.

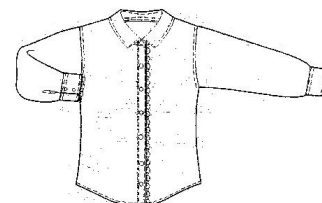
*Must purchase at Lands' End, Choice Uniforms or Flynn & O'Hara.*

*Refer to "LANDS' END" catalog or website.*

~ NOTE: ALL BLOUSES MUST BE TUCKED IN ~

ALSO, if an undershirt is worn underneath the shirt, the undershirt MUST be a plain, solid color.

A plain white undershirt must be worn under a white dress shirt.



### Blazers (Boys & Girls)...A blazer is optional for all students 3-5

Single-breasted blazer in Deep Navy

*May be purchased at Lands' End, Choice Uniforms or Flynn & O'Hara.*

*Refer to "LANDS' END" catalog or website.*



## BOTTOMS - For BOYS:

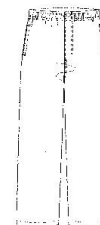
NOTE: ALL CLOTHING WITH BELT LOOPS MUST BE WORN WITH A BELT.

### Pants - (Boys).....pleated, plain or elastic waist Chino pants or cords in Khaki or Classic Navy.

*NO SWEAT PANTS, JEANS, WIND SUITS, OR JEAN CUT CORDS.*

*Must purchase at Lands' End, Choice Uniforms or Flynn & O'Hara.*

*Refer to "LANDS' END" catalog or website.*

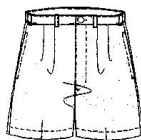


### .....Chino walking shorts in Khaki or Classic Navy.

*(shorts are permitted September through October and May through June.)*

*Must purchase at Lands' End, Choice Uniforms or Flynn & O'Hara.*

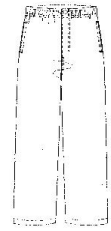
*Refer to "LANDS' END" catalog or website.*



## BOTTOMS - For GIRLS:

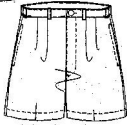
**Pants - (Girls).....pleated, plain or elastic waist Chino pants or cords in Khaki or Classic Navy.**

*NO SWEAT PANTS, JEANS, WIND SUITS, OR JEAN CUT CORDS.  
Must purchase at Lands' End, Choice Uniforms or Flynn & O'Hara.  
Refer to "LANDS' END" catalog or website.*



.....**Chino walking shorts in Khaki or Classic Navy.**

*(shorts are permitted September through October and May through June.)  
Must purchase at Lands' End, Choice Uniforms or Flynn & O'Hara.  
Refer to "LANDS' END" catalog or website.*

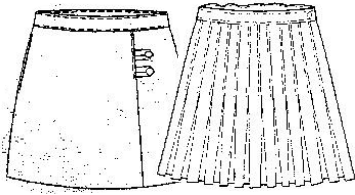


**Skirts - (Girls).....A-line skirt in Khaki or Classic Navy.**

**Four kick pleat skirt in Khaki or Navy.**

**Pleated skirt in Khaki or Classic Navy.**

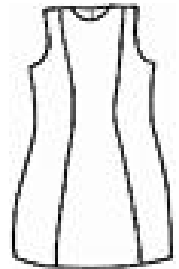
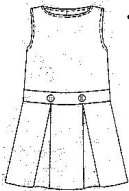
*Must purchase at Lands' End, Choice Uniforms or Flynn & O'Hara.  
Refer to "LANDS' END" catalog or website.  
NOTE: Skirt length must be knee length.*



.....**Drop Waist jumper with Four Kick Pleats in Khaki or Classic Navy.**

**Princess Line Jumper in Khaki or Navy.**

*Must purchase at Lands' End, Choice Uniforms or Flynn & O'Hara.  
Refer to "LANDS' END" catalog or website.  
NOTE: Length must be knee length.*



.....**Chino and Corduroy skort in Khaki or Classic Navy.**

*(May NOT be worn on Chapel days).  
Must purchase at Lands' End, Choice Uniforms or Flynn & O'Hara.  
Refer to "LANDS' END" catalog or website.  
NOTE: Skort length must be at finger-tip length or below.*



## CHAPEL DRESS - BOYS

**NOTE: ALL CLOTHING WITH BELT LOOPS MUST BE WORN WITH A BELT.**

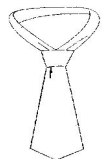
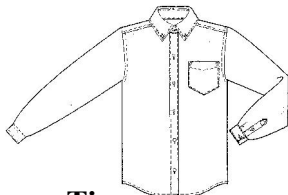
**Pants - (Boys).....pleated, plain or elastic waist Chino pants or cords in Khaki or Classic Navy**

*NO SWEAT PANTS, JEANS, WIND SUITS, OR JEAN CUT CORDS.  
Must purchase at Lands' End, Choice Uniforms or Flynn & O'Hara.  
Refer to "LANDS' END" catalog or website.*



**Dress shirts (Boys)...long or short sleeved dress shirt in WHITE.**

*Must have pointed collar, with or without buttoned down collar.  
No logo of any kind, large or small unless CCA embroidered logo.  
Must purchase at Lands' End, Choice Uniforms or Flynn & O'Hara.  
Refer to "LANDS' END" catalog or website.*



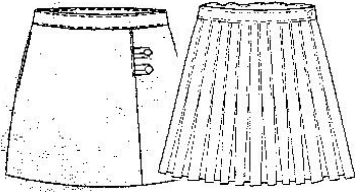
*~NOTE: ALL SHIRTS MUST BE TUCKED IN ~  
ALSO, if an undershirt is worn underneath the shirt, the undershirt MUST be solid white.*

**Ties.....MUST BE WORN on Chapel days.**

**Footwear.....Athletic footwear is acceptable with solid color socks. Spikes, platform shoes and flip flops are not allowed. Flip flops are any shoe that divides the toes.**

## CHAPEL DRESS - GIRLS

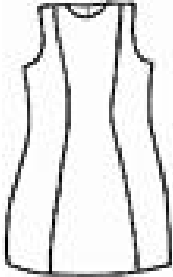
**Skirts - (Girls).....A-line skirt in Khaki or Classic Navy.  
Four kick pleat skirt in Khaki or Navy.  
Pleated skirt in Khaki or Classic Navy.**



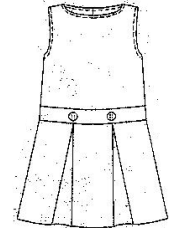
*Must purchase at Lands' End, Choice Uniforms or Flynn & O'Hara.  
Refer to "LANDS' END" catalog or website.  
NOTE: Skirt length must be knee length.*



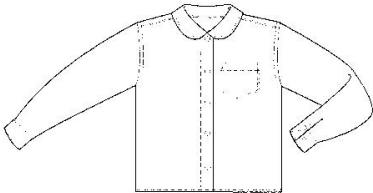
**Jumper.....Drop waist jumper with Four Kick Pleats in Khaki or Classic Navy.  
Princess Line Jumper in Khaki or Navy.**



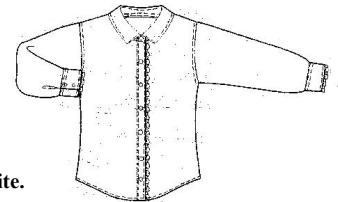
*Must purchase at Lands' End, Choice Uniforms or Flynn & O'Hara.  
Refer to "LANDS' END" catalog or website.  
NOTE: Length must be knee length.*



**Dress blouses (Girls)...long sleeved, short sleeved or tailored broadcloth, frilly dress blouse  
in WHITE.**



*May have rounded, pointed or buttoned down collar.  
No logo of any kind, large or small unless CCA embroidered logo.  
Must purchase at Lands' End, Choice Uniforms or Flynn & O'Hara.  
Refer to "LANDS' END" catalog or website.  
~ NOTE: ALL BLOUSES MUST BE TUCKED IN ~  
ALSO, if an undershirt is worn underneath the shirt, the undershirt MUST be solid white.*



## FOOT WEAR on NON-CHAPEL DAYS

**For Boys and Girls...Athletic footwear is acceptable with solid color socks. Spikes, platform shoes and flip flops are not allowed. Flip flops are any shoe that divides the toes.**

## PHYSICAL EDUCATION ATTIRE for Boys and Girls

solid blue shorts  
a plain, sleeved, white T-shirt  
white socks and sneakers (no black soles)

## HAIR

Conservatively styled hair which is clean, neat, well-groomed, and of a natural coloring. No extreme styles will be permitted. Bangs on boys and girls should be trimmed above the eye level. Boys' hair should be tapered at the sides and cut above the collar.

## **Designated JEANS DAYS**

Jeans must be **properly fitted** (*not oversized, length not touching the floor*), pulled up to the waist, clean, and neat (*no cut, torn or worn areas*). Jeans may have modest ornamentation such as stripes, appliqués, etc. All pants with belt loops must be worn with a belt.

## **Designated DRESS-DOWN DAYS**

Dress-Down Tops - A hoodie, sweatshirt, or any appropriate-modest sweater may be worn with any dress-code top.

Dress-Down Bottoms - Any modest bottom may be worn as long as it is **properly fitted** (*not oversized, length not touching the floor*). The following may not be worn: pajama bottoms, footless leggings, spandex, sweat pants, athletic shorts or pants.

Jeans must be **properly fitted** (*not oversized, length not touching the floor*), pulled up to the waist, clean, and neat (*no cut, torn or worn areas*). Jeans may have modest ornamentation such as stripes, appliqués, etc. All pants with belt loops must be worn with a belt.

**The administration reserves the right to object to any inappropriate clothing or shoes that may be considered unsafe. Also, there is a \$1 charge for each dress-down top, bottom and untucked shirt on dress-down days.**

*The administration expects all parents to partner with the school in following closely the guidelines of the dress code.*

**THANK YOU FOR YOUR COOPERATION.**

## Statement of Purpose:

As Christians, our dress should reflect our desire to honor God. Our clothing should be modest and decent (*I Timothy 2:9,10*) and should not draw undue attention to ourselves (*I John 2:15-17*). Students are to present a conservative, wholesome image as part of their testimony while on school premises and during any **Christian Central Academy** related school function both on and off our campus (*athletic events, music programs, etc.*).

CCA has chosen **LANDS' END** (information below), **CHOICE UNIFORMS** (800-482-0675, [www.choiceuniforms.com](http://www.choiceuniforms.com)) and **FLYNN & O'HARA** (800-441-4122) as the dress code suppliers. Lands' End clothing is also available at Sears.

**IMPORTANT ORDERING INFORMATION: CCA's Preferred School number is: 9000-6544-2**  
*If desired, CCA's Embroidered Logo number is: 0141867K (additional \$5.50)*

MAIL: **LANDS' END for School**  
2 Lands' End Lane  
Dodgeville, WI 53595-0640

PHONE: 1-800-469-2222  
FAX: 1-800-332-0103  
INTERNET: [www.landsend.com/school](http://www.landsend.com/school)

### Grades 6-12 DRESS CODE FOR 2009-2010

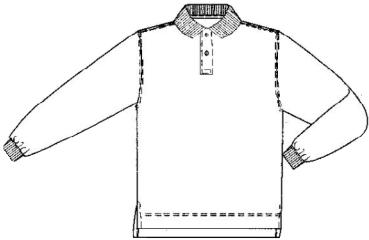
All clothing and footwear worn to school must be labeled with your student's name. This will enable us to return to your student the many brand new items that are sent to lost and found.

### TOPS - For BOYS & GIRLS:

Students may wear solid, long sleeved, turtleneck shirts under a dress code polo or a dress code dress shirt which must be tucked in.

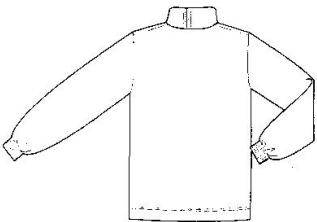
#### **Polo shirts.....long or short sleeved in solid colors ONLY** (not Lands' End "Feminine Fit")

No logo of any kind, large or small unless CCA embroidered logo (CCA Booster Club polo).  
*Must purchase at Lands' End, Choice Uniforms or Flynn & O'Hara.*  
*Refer to "LANDS' END" catalog or website.*  
~ NOTE: ALL SHIRTS MUST BE TUCKED IN ~  
ALSO, if an undershirt is worn underneath the shirt, the undershirt MUST be a plain, solid color.  
A plain white undershirt must be worn under a white shirt.



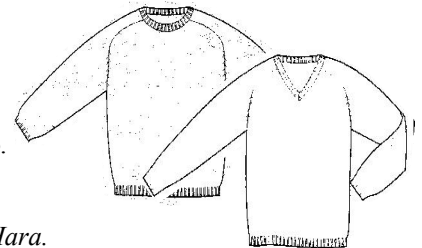
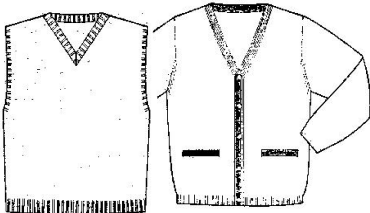
#### **Turtlenecks.....long sleeved in solid colors ONLY** (NO MOCK turtlenecks please!)

No logo of any kind, large or small unless CCA embroidered logo.  
*Must purchase at Lands' End, Choice Uniforms or Flynn & O'Hara.*  
*Refer to "LANDS' END" catalog or website.*  
~ NOTE: ALL SHIRTS MUST BE TUCKED IN ~



#### **Sweaters.....in solid colors ONLY**

Cardigan, V-neck, Crew neck, Vest  
No logo of any kind, large or small unless CCA embroidered logo.  
**Must** have polo, turtleneck, or dress shirt/blouse underneath.  
No belts please.  
*Must purchase at Lands' End, Choice Uniforms or Flynn & O'Hara.*  
*Refer to "LANDS' END" catalog or website.*



#### **CCA Sweatshirts....in blue or white ONLY with CCA logo**

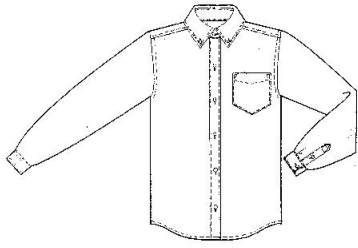
**Must** have polo, turtleneck, or dress shirt/blouse underneath.  
MUST be purchased from CCA Booster Club, located in the Clothes Connection.  
Note: The collar must be worn on the outside of the sweatshirt, please.



CHRISTIAN  
CENTRAL  
ACADEMY

## TOPS *continued*

### Dress shirts (Boys)..long or short sleeved dress shirt in solid colors ONLY (NO Chambray please!)



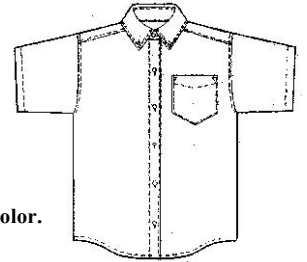
Must have pointed collar, *with* or *without* buttoned down collar.  
No logo of any kind, large or small unless CCA embroidered logo.  
WHITE for Chapel.

WHITE for Performing Arts Grades 6-12 (band, orchestra, chorus, etc.)  
*Must purchase at Lands' End, Choice Uniforms or Flynn & O'Hara.*

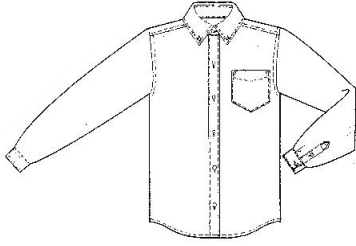
*Refer to "LANDS' END" catalog or website.*

~NOTE: ALL SHIRTS MUST BE TUCKED IN ~

ALSO, if an undershirt is worn underneath the shirt, the undershirt MUST be a plain, solid color.  
A plain white undershirt must be worn under a white dress shirt.



### Dress shirts (Girls)..long or short sleeved, buttoned down Oxford shirt, or tailored broadcloth, frilly blouse in solid colors ONLY (NO Chambray please!)



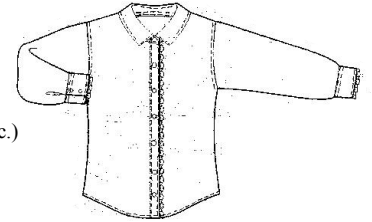
Must have pointed collar, *with* buttoned down collar.  
No logo of any kind, large or small unless CCA embroidered logo.  
WHITE for Chapel.

WHITE for Performing Arts Grades 6-12 (band, orchestra, chorus, etc.)  
*Must purchase at Lands' End, Choice Uniforms or Flynn & O'Hara.*

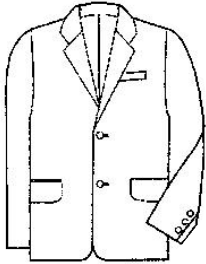
*Refer to "LANDS' END" catalog or website.*

~NOTE: ALL SHIRTS MUST BE TUCKED IN ~

ALSO, if an undershirt is worn underneath the shirt, the undershirt MUST be a plain, solid color.  
A plain white undershirt must be worn under a white dress shirt.



### Blazers (Boys & Girls)..A blazer is recommended for all students 6-12 and may be worn any day. It is required for students in the Performing Arts (dress rehearsals and concerts) in Grades 6-12. (band, orchestra, chorus, etc.)



Single-breasted blazer in Deep Navy.

*May be purchased at Lands' End, Choice Uniforms or Flynn & O'Hara.*

*Refer to "LANDS' END" catalog or website.*

### .....Drop Waist jumper with Four Kick Pleats in Khaki or Classic Navy.

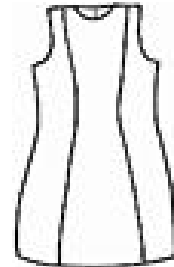
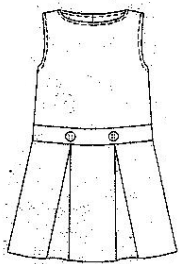
#### Princess Line jumper in Khaki or Navy.

*Must purchase at Lands' End, Choice Uniforms or Flynn & O'Hara.*

*Refer to "LANDS' END" catalog or website.*

NOTE: Length must be knee length.

*May be worn on Chapel Day with a white oxford shirt.*



## BOTTOMS - For BOYS:

NOTE: ALL CLOTHING WITH BELT LOOPS MUST BE WORN WITH A BELT.

### Pants - (Boys).....pleated, plain or elastic waist Chino pants or cords in Khaki or Classic Navy.

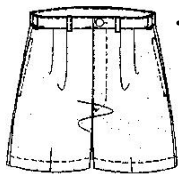
NO SWEAT PANTS, JEANS, WIND SUITS, OR JEAN CUT CORDS.

*Must purchase at Lands' End, Choice Uniforms or Flynn & O'Hara.*

*Refer to "LANDS' END" catalog or website.*



**BOTTOMS - For BOYS:**



.....**Chino walking shorts in Khaki or Classic Navy.**  
*(shorts are permitted September through October and May through June.)*  
*Must purchase at Lands' End, Choice Uniforms or Flynn & O'Hara.*  
*Refer to "LANDS' END" catalog or website.*

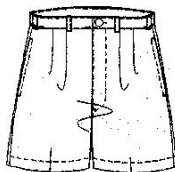
**BOTTOMS - For GIRLS:**

**Pants - (Girls).....pleated, plain or elastic waist Chino pants or cords in Khaki or Classic Navy.**

*NO SWEAT PANTS, JEANS, WIND SUITS, OR JEAN CUT CORDS.*  
*Must purchase at Lands' End, Choice Uniforms or Flynn & O'Hara.*  
*Refer to "LANDS' END" catalog or website.*



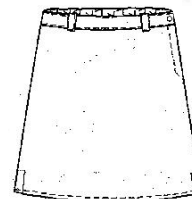
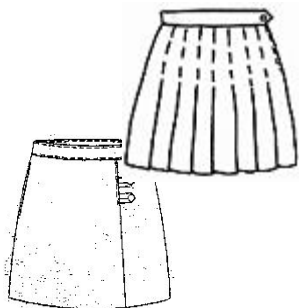
.....**Chino walking shorts and skorts in Khaki or Classic Navy.**  
*(shorts/finger-tip length skorts are permitted September through October and May through June.)*  
*Must purchase at Lands' End, Choice Uniforms or Flynn & O'Hara.*  
*Refer to "LANDS' END" catalog or website.*  
**NOTE:** *Shorts/skorts must be finger-tip length or below.*



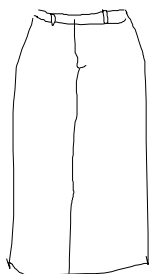
**Skirts - (Girls).....A-line skirt in Khaki or Classic Navy.**

**Four kick pleat skirt in Khaki or Navy.**  
**Pleated skirt in Khaki or Classic Navy.**  
**Chino and Corduroy skort in Khaki or Classic Navy.**  
*Must purchase at Lands' End, Choice Uniforms or Flynn & O'Hara.*  
*Refer to "LANDS' END" catalog or website.*  
**NOTE:** *Skirt length must be knee length.*  
*Skorts may NOT be worn on Chapel days.*  
*Skorts must be knee-length or below.*

**\*\* If the skort is not long enough to fall at the knee, it can only be worn when walking shorts are allowed.**



.....**Chino skirt in Desert Khaki or True Navy.**  
*knee length and midcalf-length*  
*Must purchase at Lands' End, Choice Uniforms or Flynn & O'Hara.*  
**NOTE:** *This style has been discontinued at Lands' End.*

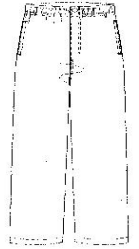


# CHAPEL DRESS - BOYS

NOTE: ALL CLOTHING WITH BELT LOOPS MUST BE WORN WITH A BELT.

**Pants - (Boys).....pleated, plain or elastic waist Chino pants or cords in Khaki or Classic Navy.**

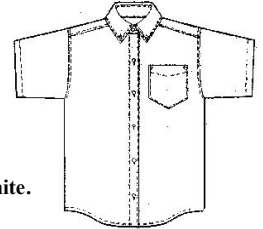
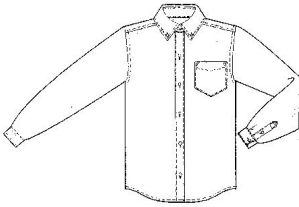
*NO SWEAT PANTS, JEANS, WIND SUITS, OR JEAN CUT CORDS.  
Must purchase at Lands' End, Choice Uniforms or Flynn & O'Hara.  
Refer to "LANDS' END" catalog or website.*



**Dress shirts (Boys)...long or short sleeved dress shirt in WHITE.**

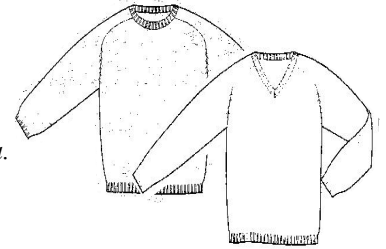
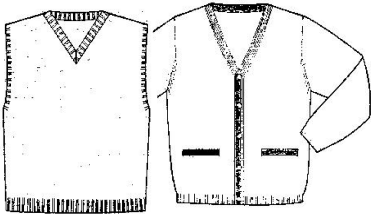
Must have pointed collar, *with* or *without* buttoned down collar.  
No logo of any kind, large or small unless CCA embroidered logo.  
*Must purchase at Lands' End, Choice Uniforms or Flynn & O'Hara.  
Refer to "LANDS' END" catalog or website.*

~ NOTE: ALL SHIRTS MUST BE TUCKED IN ~  
ALSO, if an undershirt is worn underneath the shirt, the undershirt MUST be plain white.



**Sweaters.....in solid colors ONLY- optional for Chapel**

Cardigan, V-neck, Crew neck, Vest  
No logo of any kind, large or small unless CCA embroidered logo.  
**Must** have dress shirt/blouse underneath.  
*Must purchase at Lands' End, Choice Uniforms or Flynn & O'Hara.  
Refer to "LANDS' END" catalog or website.*

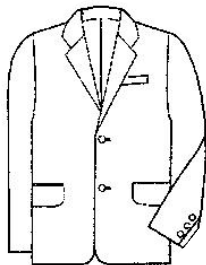


**Blazers (Boys & Girls)...A blazer is recommended for all students 6-12 and may be worn any day.**

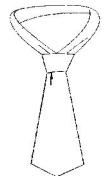
**Required for students in the Performing Arts (dress rehearsals and concerts)**

**in Grades 6-12.** (band, orchestra, chorus, etc.)

Single-breasted blazer in Deep Navy.  
*May be purchased at Lands' End, Choice Uniforms or Flynn & O'Hara.  
Refer to "LANDS' END" catalog or website.*



**Ties.....MUST BE WORN on Chapel days.**

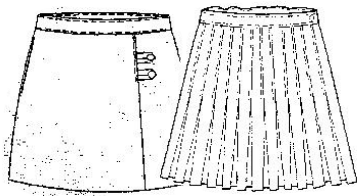


**Footwear.....Dress shoes or dress boots are required on Chapel days with solid color socks.  
(Winter wear, heavyweight boots and any type of sneakers are not allowed on Chapel day.)**

# CHAPEL DRESS - GIRLS

NOTE: ALL CLOTHING WITH BELT LOOPS MUST BE WORN WITH A BELT.

**Skirts - (Girls).....A-line skirt in Khaki or Classic Navy.**



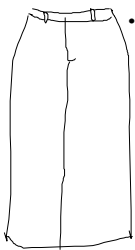
**Four kick pleat skirt in Khaki or Navy.**

**Pleated skirt in Khaki or Classic Navy.**

*Must purchase at Lands' End, Choice Uniforms or Flynn & O'Hara.*

*Refer to "LANDS' END" catalog or website.*

*NOTE: Skirt length must be knee length.*



.....**Chino skirt in Desert Khaki or True Navy.**

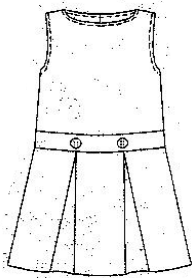
knee length and midcalf-length

*Must purchase at Lands' End, Choice Uniforms or Flynn & O'Hara.*

*Refer to "LANDS' END" catalog or website.*

**NOTE: This style has been discontinued at Lands' End.**

.....**Drop Waist jumper with Four Kick Pleats in Khaki or Classic Navy.**



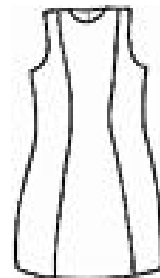
**Princess Line jumper in Khaki or Navy.**

*Must purchase at Lands' End, Choice Uniforms or Flynn & O'Hara.*

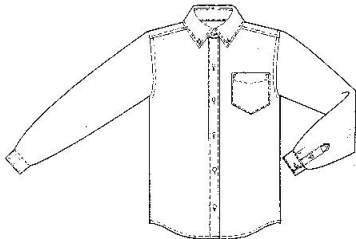
*Refer to "LANDS' END" catalog or website.*

*NOTE: Length must be knee length.*

*May be worn on Chapel Day with a white oxford shirt.*



**Dress shirts (Girls) long or short sleeved, buttoned down Oxford shirt, or tailored broadcloth, frilly blouse in WHITE**



Must have pointed collar, *with* buttoned down collar.

No logo of any kind, large or small unless CCA embroidered logo.

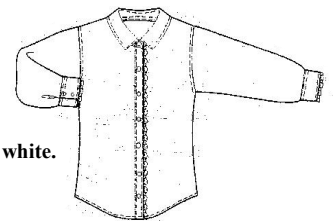
WHITE for Performing Arts Grades 6-12 (band, orchestra, chorus, etc.)

*Must purchase at Lands' End, Choice Uniforms or Flynn & O'Hara.*

*Refer to "LANDS' END" catalog or website.*

~NOTE: ALL SHIRTS MUST BE TUCKED IN~

ALSO, if an undershirt is worn underneath the shirt, the undershirt MUST be plain white.



**Sweaters.....in solid colors ONLY- optional for Chapel**

Cardigan, V-neck, Crew neck, Vest

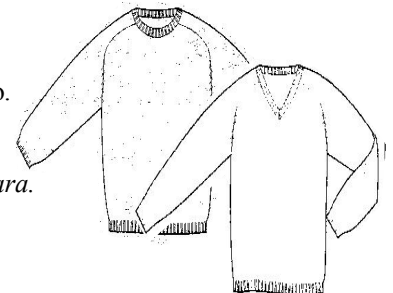
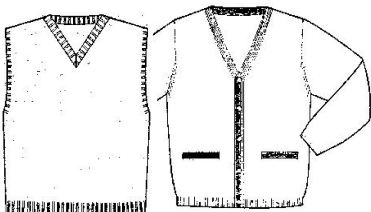
No logo of any kind, large or small unless CCA embroidered logo.

**Must** have dress shirt/blouse underneath.

No belts please.

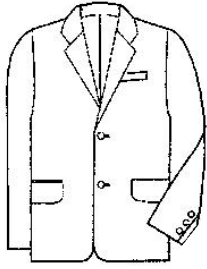
*Must purchase at Lands' End, Choice Uniforms or Flynn & O'Hara.*

*Refer to "LANDS' END" catalog or website.*



**Blazers (Boys & Girls).** A blazer is recommended for all students 6-12 and may be worn any day.

**Required for students in the Performing Arts (dress rehearsals and concerts) in Grades 6-12.** (band, orchestra, chorus, etc.)



Single-breasted blazer in Deep Navy.

May be purchased at *Lands' End, Choice Uniforms or Flynn & O'Hara.*  
Refer to "LANDS' END" catalog or website.

**Footwear.....Sensible dress shoes required on Chapel days (no spikes, flip flops or platform shoes) with solid color hosiery, whether nylons, tights or socks.**

## CONCERT DRESS

**GIRLS:** White oxford blouse, deep navy single breasted blazer, dress code khaki skirt (knee length or below), dress shoes with appropriate hosiery.

**BOYS:** White Chapel shirt, colorful tie, deep navy single breasted blazer, dress code khaki pants, belt, dress shoes and socks.

**Boys and Girls.....**Clean, *sensible* dress shoes (*loafers, flats, heeled shoes, dress sandals*).

## FOOT WEAR on NON-CHAPEL DAYS

*Spikes, platform shoes and flip flops are not allowed. (Flip flops are any shoe that divides the toes).* Dress boots and sneakers are acceptable, with solid color hosiery, whether nylons, tights or socks.

## HAIR

Conservatively styled hair which is clean, neat, well-groomed, and of a natural coloring. No extreme styles will be permitted. Bangs on boys and girls should be trimmed above the eye level. Boys' hair should be tapered at the sides and cut above the collar.

Racist, sexist, gang-influenced, rock group, or satanic patches or slogans are not permitted on any personal items such as book bags, backpacks or lockers.

## ACCESSORIES

No extreme accessories (heavy chains, body piercing, tattoos, etc.)

Hats, caps, or sunglasses are not to be worn in the building.

**Girls:** Jewelry should be modest. Girls may wear **up to two earrings** in each ear, and **two bracelets** on each arm.

**Boys:** No earrings are to be worn.

## PHYSICAL EDUCATION ATTIRE for Boys and Girls

solid blue shorts  
a plain, sleeved, white T-shirt  
white socks and sneakers (no black soles)

### Designated JEANS DAYS

Jeans must be **properly fitted** (*not oversized, length not touching the floor*), pulled up to the waist, clean, and neat (*no cut, torn or worn areas*). Jeans may have modest ornamentation such as stripes, appliqués, etc. All pants with belt loops must be worn with a belt.

### Designated DRESS-DOWN DAYS

Dress-Down Tops - A hoodie, sweatshirt, or any appropriate-modest sweater may be worn with any dress-code top.

Dress-Down Bottoms - Any modest bottom may be worn as long as it is **properly fitted** (*not oversized, length not touching the floor*). The following may not be worn: pajama bottoms, footless leggings, spandex, sweat pants, athletic shorts or pants.

Jeans must be **properly fitted** (*not oversized, length not touching the floor*), pulled up to the waist, clean, and neat (*no cut, torn or worn areas*). Jeans may have modest ornamentation such as stripes, appliqués, etc. All pants with belt loops must be worn with a belt.

**The administration reserves the right to object to any inappropriate clothing or shoes that may be considered unsafe. Also, there is a \$1 charge for each dress-down top, bottom and untucked shirt on dress-down days.**

### SENIOR CLASS JEANS DAYS

SENIORS may choose to wear **dress code appropriate jeans** (described above) with **dress code appropriate tops** on MONDAYS ONLY. Non-compliance with dress code regulations will result in the loss of jeans privileges for seniors. First time offenders will lose the privilege for the remainder of the school year.

*The administration expects all parents to partner with the school in following closely the guidelines of the dress code.*

**THANK YOU FOR YOUR COOPERATION.**